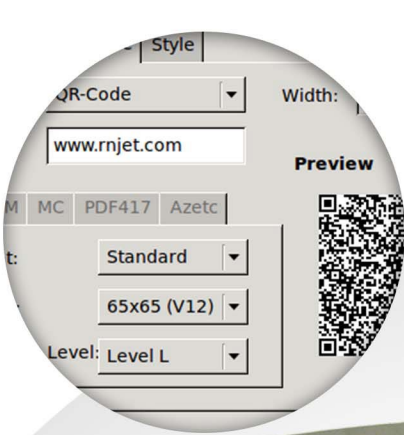


USER MANUAL

RNJet



www.rnmark.com

25-16 Sims Cres
Richmond Hill, ON, L4B 2P1
Canada
Tel: 1- (647) 931-7236
Fax: 1-(647) 931-7240
Toll Free:1 - 866 334 5991
info@rnmark.com
www.rnmark.com


Coding and Marking Solutions
Made in Canada 

Contents

User Interface	3
Icons	3
Selecting and Typing	4
Selecting.....	4
Typing.....	4
Locking Screen	4
File Utility	5
Creating New Label	5
Opening an existing label.....	5
Saving Label.....	5
Function	7
Text	7
Content Tab.....	7
Converter for External Input Data	8
Style tab	8
Date and Time.....	10
Content Tab.....	10
Style Tab.....	10
Counter	11
Content Tab.....	11
Style Tab.....	12
Image	12
Barcode	13
Standard Tab	13
2D Barcode Tab	14
Special Tab	14
Style Tab.....	14
External Database	15

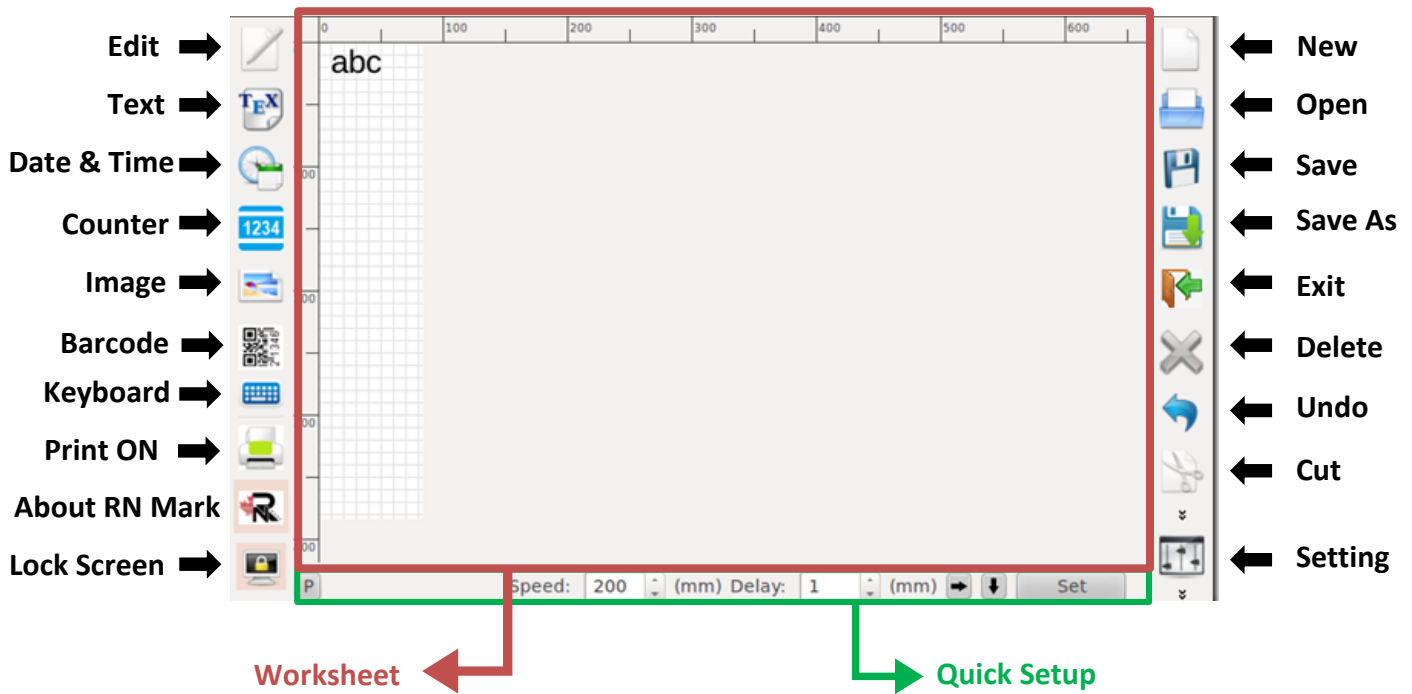
Local Mode.....	15
Remote Mode	19
Editing Options.....	20
Select.....	20
Move	20
Edit	20
Delete.....	20
Operating Setups	21
System Settings.....	21
General Tab.....	21
Print Tab.....	22
Shift Tab	22
Designer Tab	23
Date Tab	23
Screen.....	24
Operation Tab	24
Input Tab	25
Print Settings.....	26
General Tab.....	26
Secondary Tab.....	26
Print ON/OFF.....	27
Ink Calculation.....	28
Quick Setup.....	29


User Interface

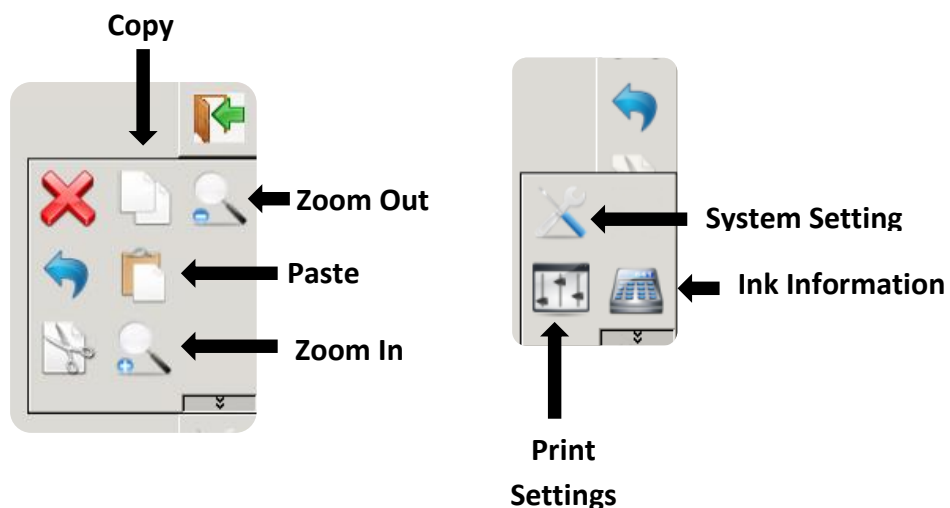
Icons

Following figure show the RNJet interface and the location of the icons.

Figure 1: Location of Icons



Following figures are additional icons which can be accessed by tapping on 




Selecting and Typing

Selecting

You can select the functional icons and features on the worksheet by just tapping the screen using your fingers or a stylus.

Typing

If at any time you require to type characters you can activate the keyboard interface by tapping on the “keyboard” icon  located on the lower left side of the screen.


Once the input panel window is displayed you can type by tapping on the characters.

Note: By selecting the “shift” key you get access to capital letters and secondary characters



Figure 2: Keyboard

Locking Screen

If at any time you want to activate the lock screen, tap on the “Lock Screen” icon  located on the lower left side of the screen. After tapping the “Lock Screen” icon following screen will appear which you need to enter the password to unlock the screen:




In order to setup the password refer to *Operation Setups* → *System Setting* → *Screen*

File Utility

Creating New Label

You can create new labels by tapping on the “New” icon . A new grid would be displayed on the worksheet area.

Opening an existing label

You can get access to existing labels by tapping on the “open” icon . This prompts the “Open file” window which displays all the recent files that have been saved into the system.

You can double tap on the file name that you want to open or you can search for the file by typing its name on the “Name” dialogue box.

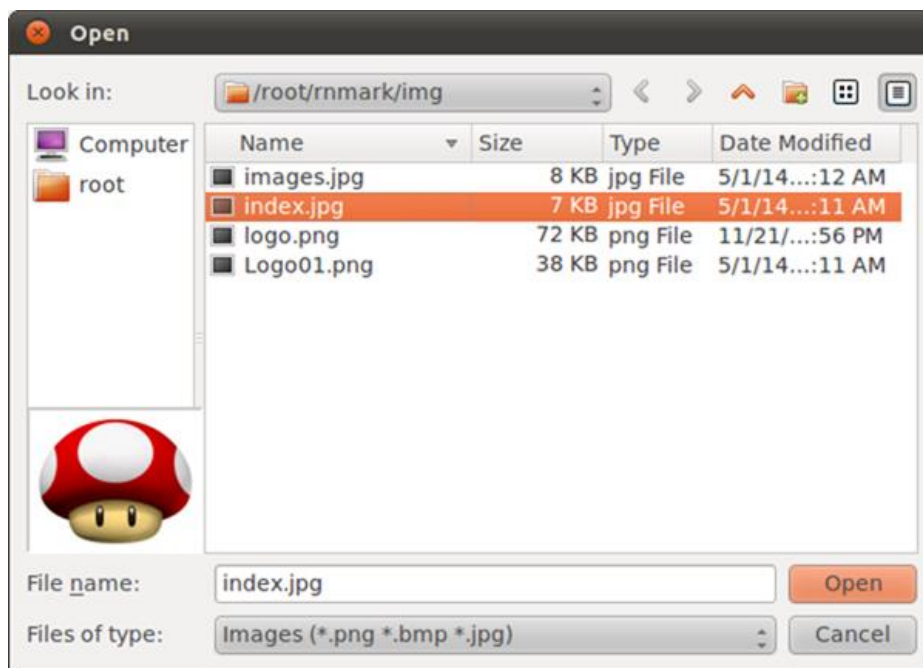



Figure 3: Open File

Saving Label

Tap on the “save” icon  (if you previously saved and named the label, RNce does a quick save. If you have never saved the label the “save as” window is displayed.)

In the save as dialogue box you can type the name you want the label to be saved as.

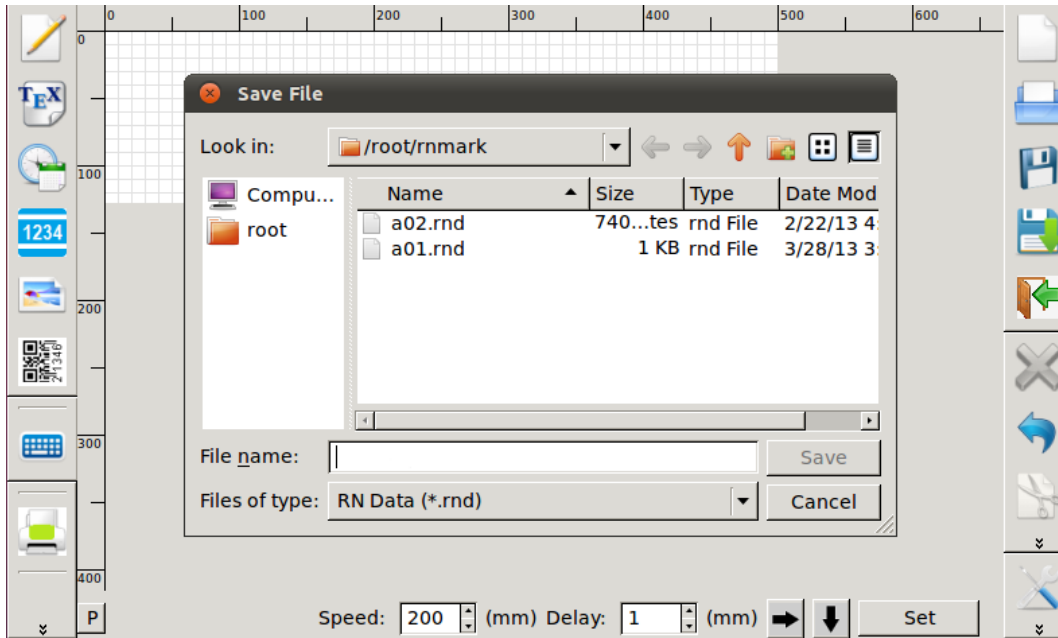


Figure 4: Save as dialogue box

Function

Text

To insert a new text box in your label:

1. Tap on the “Text” icon  .
2. Tap on the grid that is displayed on the worksheet

These two steps open up the “Text Panel” window. This window allows the user to define the text in terms of its font, size, style and orientation.

Content Tab

Text: Type in the message you want to insert in your label

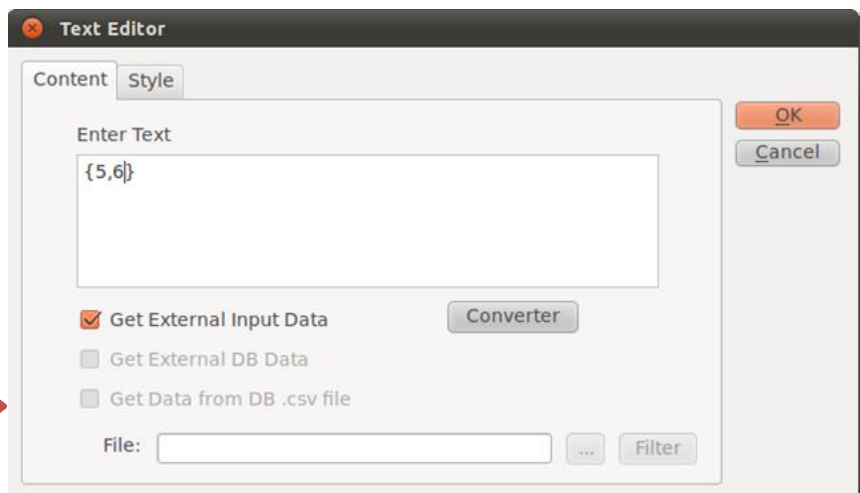
External Text: Instead of typing the message, it can be imported as follow:

Get External Input Data:
To be used to get data from Barcode Scanner or similar device.

Get External DB Data: To be used to get data from a PC.

Get Data from DB .csv file: To be used to get data from a .csv file which is copied in the USB drive. The file can be opened through the *File* Box.

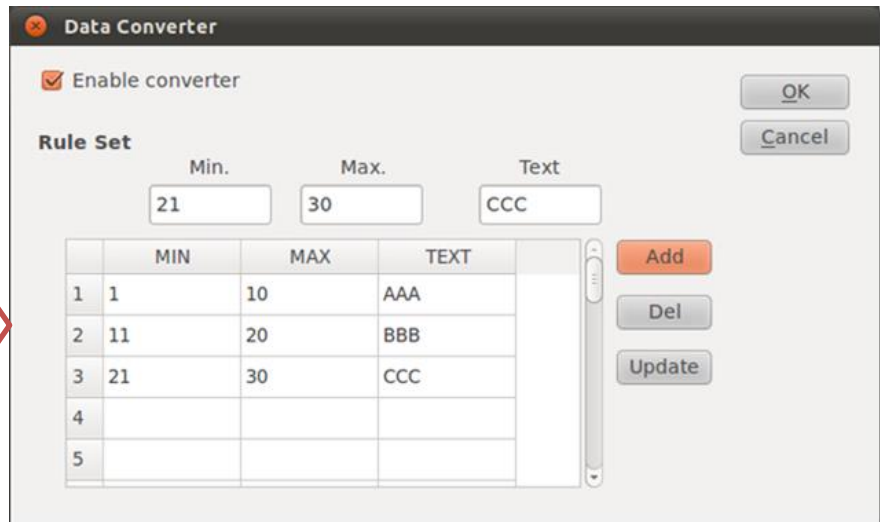
Figure 5: Text Editor - Content Tab



Converter for External Input Data

User has an option to setup a converter and rules for external input data. In above example, if the input data is "1234000012345678".

After apply format "{5,6}", the number is "000012", it is between 11 and 20, so the message will has "BBB" as text, and print it out.



Style tab

Style: Allows you to indicate the orientation of the text box.

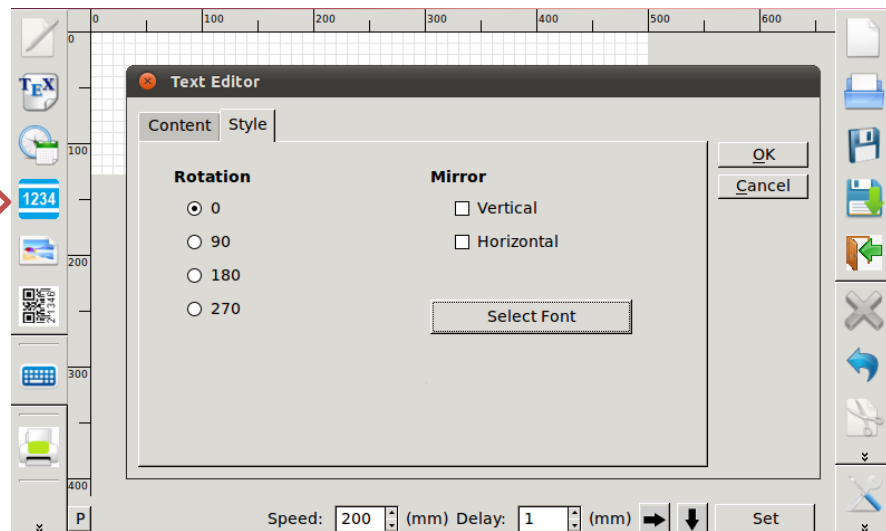


Figure 6: Text Editor- Style Tab

Select font:
Define the
Font, Size and
Style of the
text.

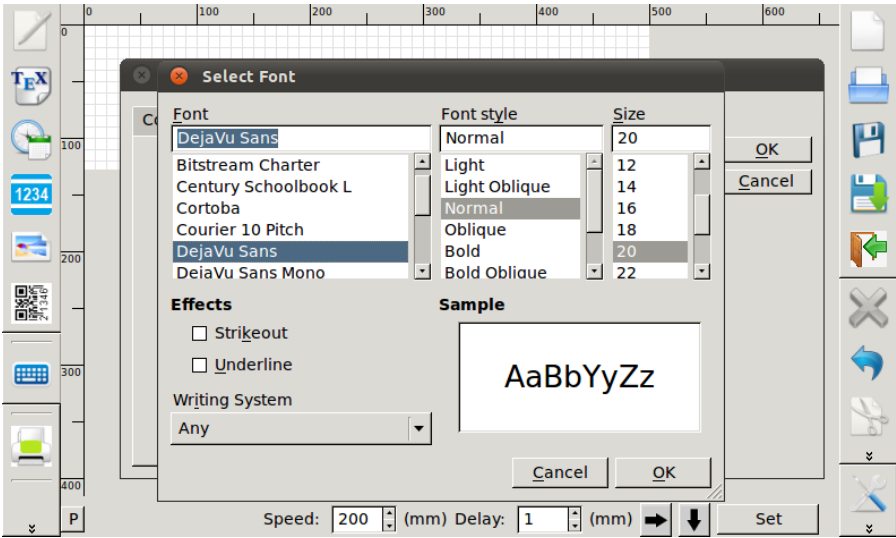



Figure 7: Text Editor - Style Tab-Select Font

Note: Once the text is fully defined tap the “OK” button to return to the worksheet and view the created text.

Date and Time

The Date and Time can be inserted in the labels, which can be updated with each print.

In order to insert a new time and date:

1. Tap on the “Time/Date” icon 
2. Tap on the grid

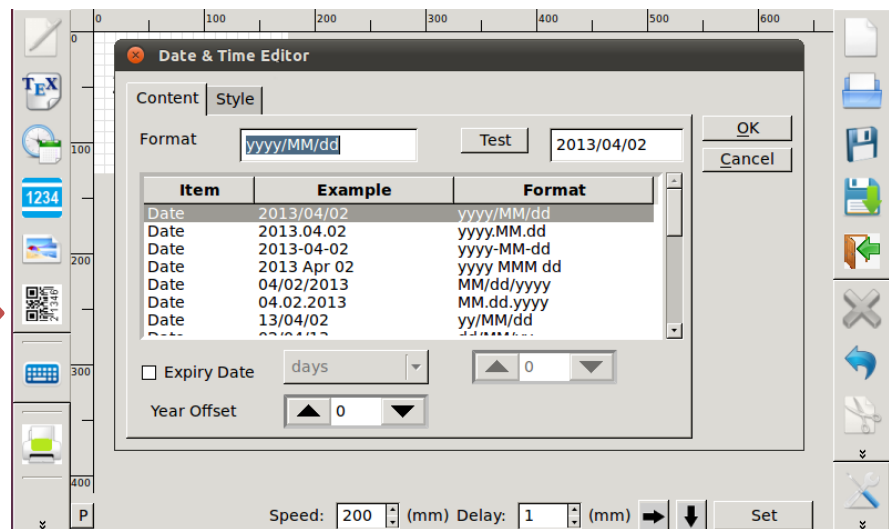
Doing these steps opens the “Date Time parameter” window.

Content Tab

Select the type of format. Once a certain format has been selected, it can be previewed on the “Display Format” dialogue box by pressing test.

The user can select the input date/time to be offset in terms of days, weeks and/or years. This option facilitates „expiry date“ on products.

Figure 8: Date & Time Editor



Style Tab


The style of the counter displayed on the label can be modified in this field

*Once the counter is fully defined tap the “OK” button to return to the worksheet and view the created counter.

Counter

You can display counters in your label that increment and/or decrement with each print.

To insert a new counter in your label:

1. Tap on the “counter” icon 
2. Tap on the grid that is displayed on the worksheet

Note: Hold the printer head at all times during the adjustment process.

Doing these steps will open the “counter parameter” window. You can define your counter according to the purpose of each print.

Content Tab

Digits: The number of digits on the counter

Current: The initial number displayed by the counter

Limit: The final number displayed by the counter

Step: The number of steps in each increment

Decrement Printing: The default option can be changed from an incrementing counter to a decrementing counter

Repeat: By checking in the repeat box, once the counter has reached its limit it resets to the initial (current) number on the next print

Package: insert your batch number

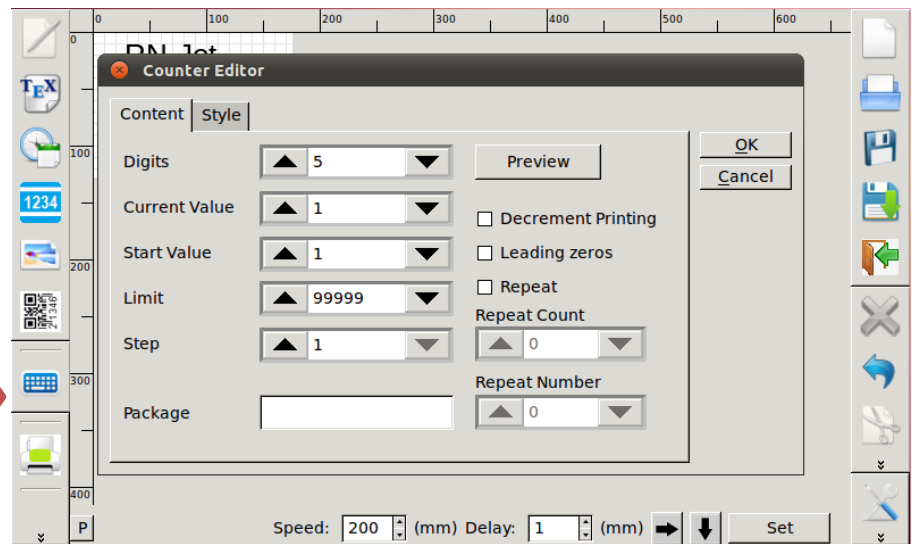


Figure 9: Counter Editor

Style Tab

The style of the counter displayed on the label can be modified in this field

*Once the counter is fully defined tap the “OK” button to return to the worksheet and view the created counter.

Image

To insert an image:

1. Tap on the “image” icon
2. Tap on the grid.

These two steps will display the “Image Set-up” window.

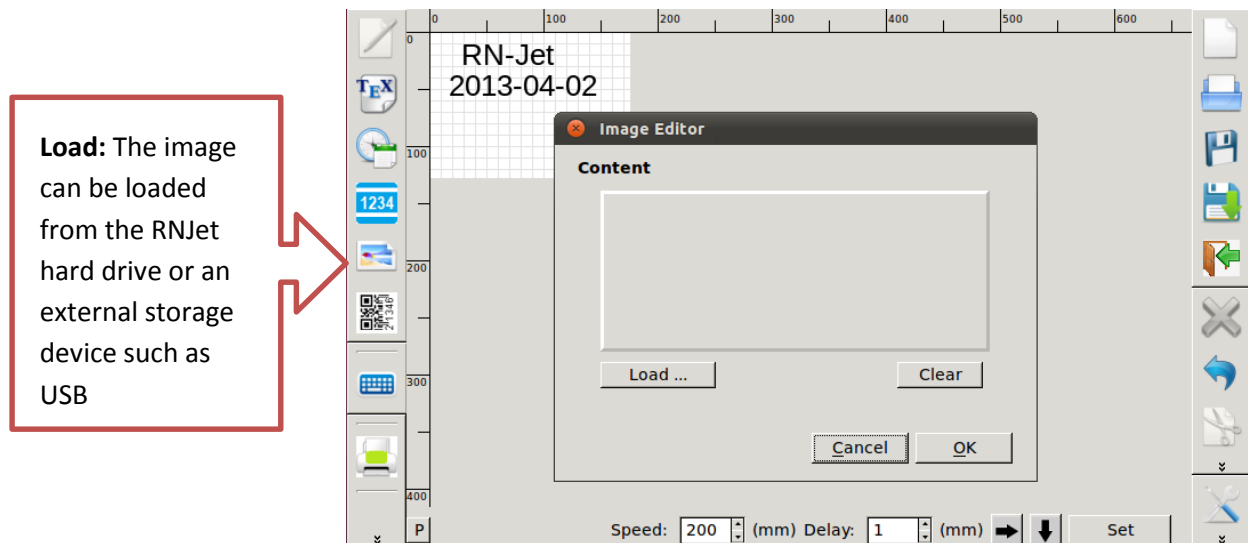


Figure 10: Image Editor

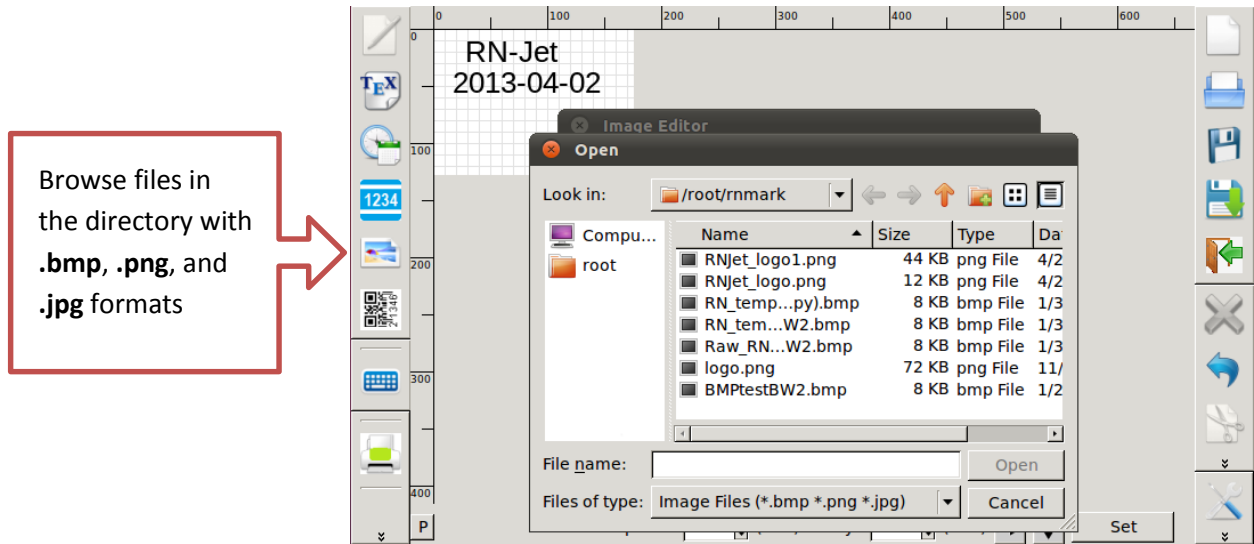


Figure 11: Open Image Dialogue Box

Barcode

To insert a barcode:

1. Tap the “Barcode” icon
2. Tap on the grid

These steps will display the “Barcode setup” window.

Standard Tab

Bar Type You can select the barcode type by selecting one from the drop-down list.

The **Bar Height**, **Bar Width**, and **Border Width** can be adjusted in this field.

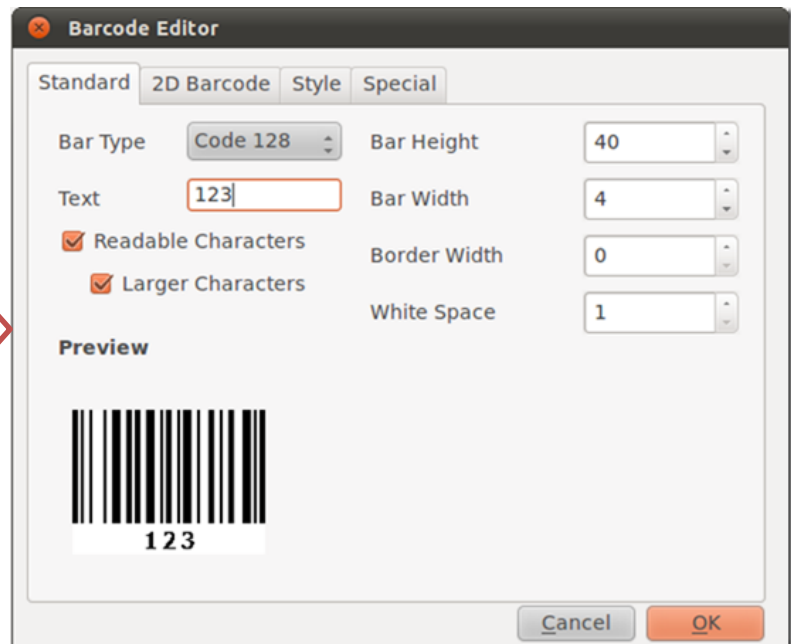


Figure 12: Barcode Editor - Standard Tab

2D Barcode Tab

Bar Type: types of 2D barcodes can be selected from drop down list .Also, **Width**, **Text** and **Bar Type format** can be edited

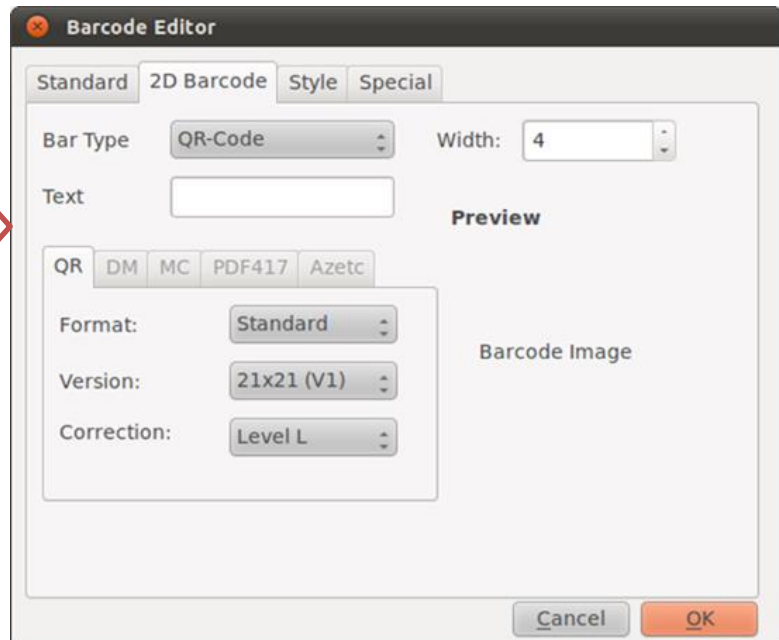


Figure 13: Barcode Editor - 2D Barcode Tab

Special Tab

In **Special Tab**, *Dynamic Barcodes* can be created either from **External Text** (i.e. barcode Scanner) or **Object Barcode** (Date Time and Counter).

Simply choose one of the types and add it to the worksheet.

For **External Text**, if the text from Barcode Scanner make sure to check “*Get text from barcode scanner*”

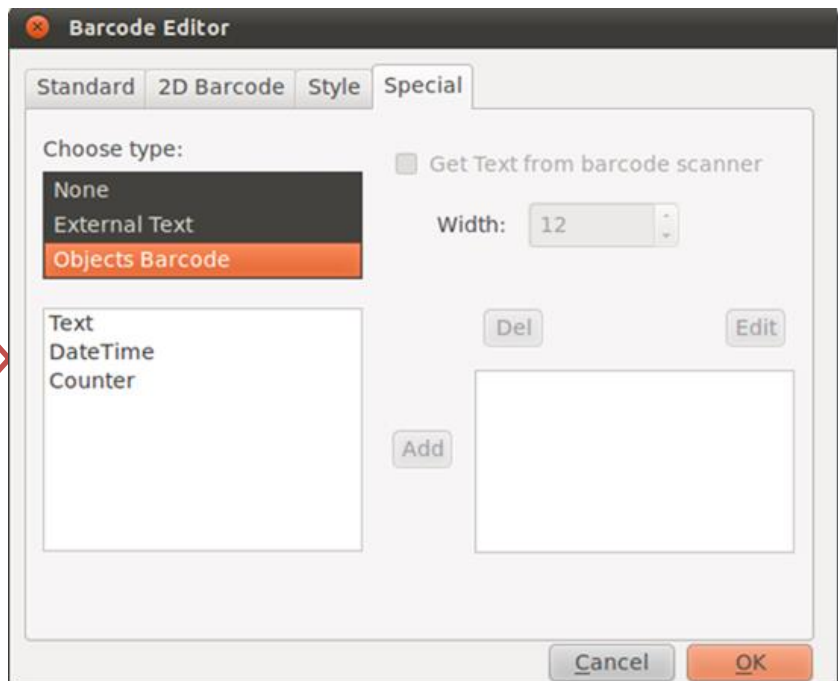


Figure 14: Barcode Editor - Special Tab

Style Tab

The orientation of the barcode can be defined in this field

*Tap the “OK” button to return to the worksheet and view the inserted barcode.

External Database

Local Mode

Note: Suppose user has database system already on Desktop

Print all database record data in .csv file

- 1 Export database data to .csv file
 - 2 Copy the .csv file from Desktop to USB drive
 - 3 Turn on RNJet machine, plug in the USB drive
 - 4 Copy .csv file from USB drive to RNJet machine
- 4.1. Open "System Settings" dialog on RNJet, go to "Operation" tab, click "Import Data" button

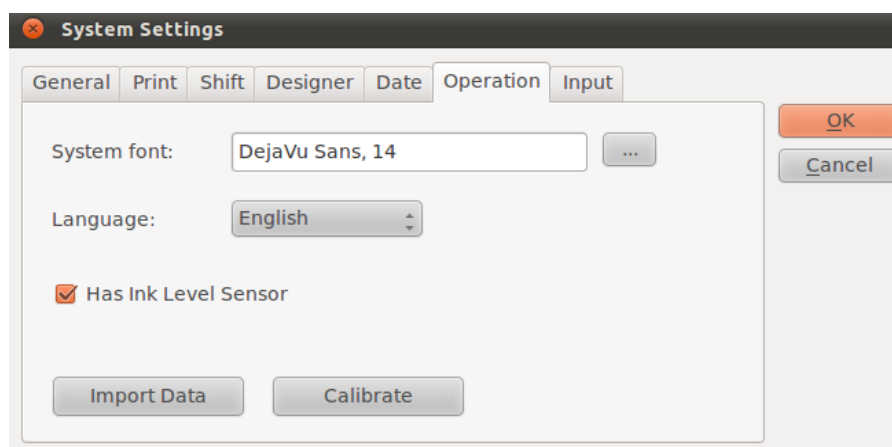


Figure 15: System Setting- Operation Tab

- 4.2. On opened "Import Data" dialog, click "Open" button, the .csv file in USB drive will be shown in list under "USB drive"; Click "Image" to switch to image and external data folder, then choose user's .csv file by clicking the file name in the list and copy it to RNJet by clicking "->" button

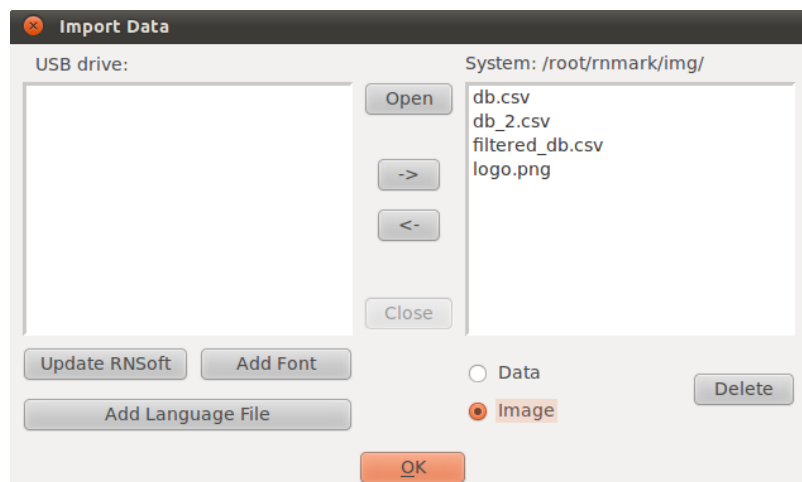


Figure 16: Import Data Dialog

- 4.3. Click "close" button to safely remove USB drive, then click "OK" to close the dialog

5 User database data for printing

5.1. Open "Text Editor" dialog to create a database data object for message

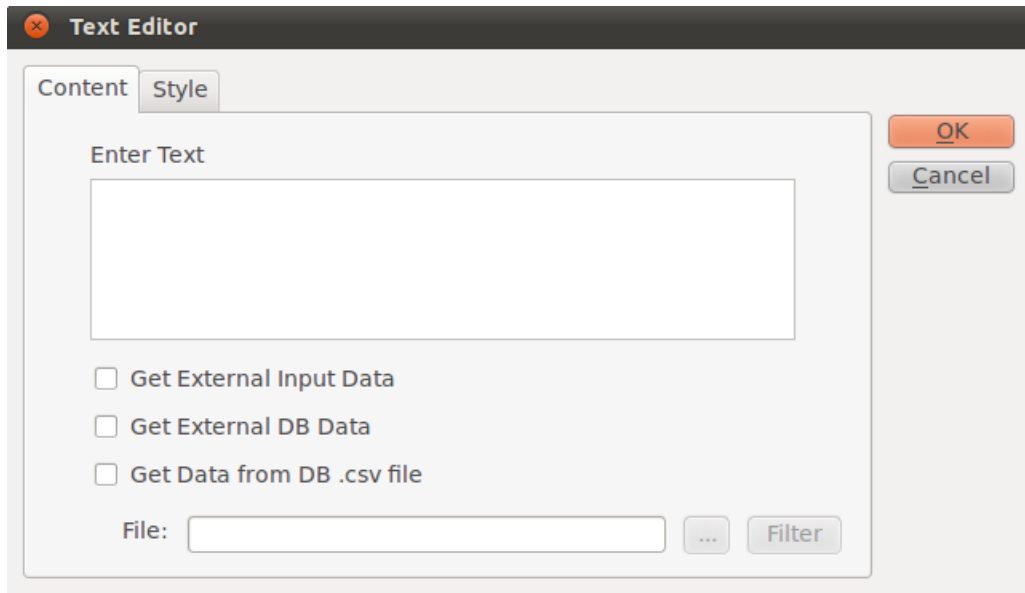


Figure 17: Text Editor Dialog

Click "Get Data from DB .csv file" checkbox, then choose .csv file from RNJet machine, User will get dialog like below, the first line of .csv file will be shown in "Enter Text" area.

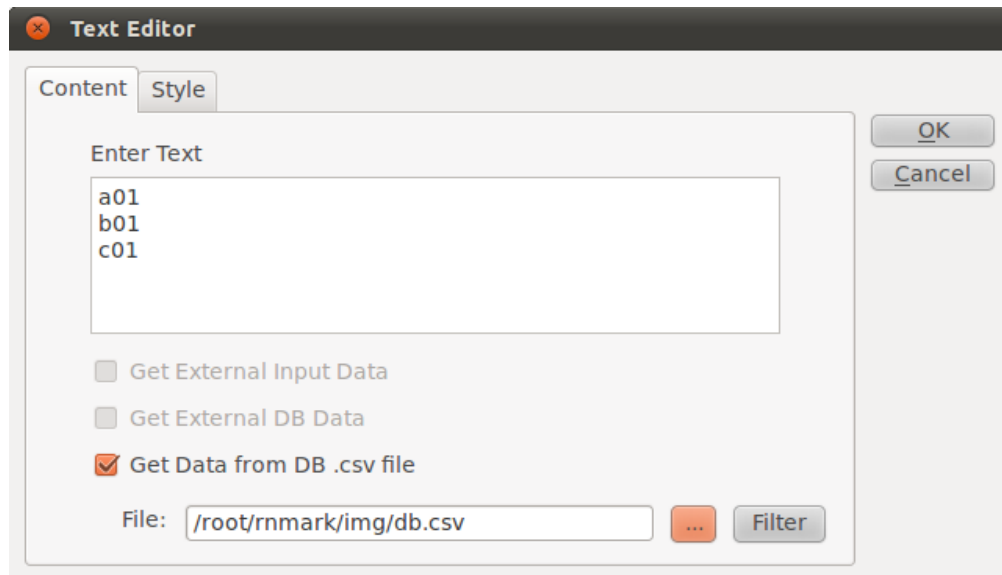


Figure 18: Text Editor-Get Data from DB

NOTE: A. The first line of .csv file is used by RNJet to decide the drawing area size of all database record data, so the user should create or modify the first line of .csv file to suit his need.

- 6 When the message with database object is ready, user can start printing

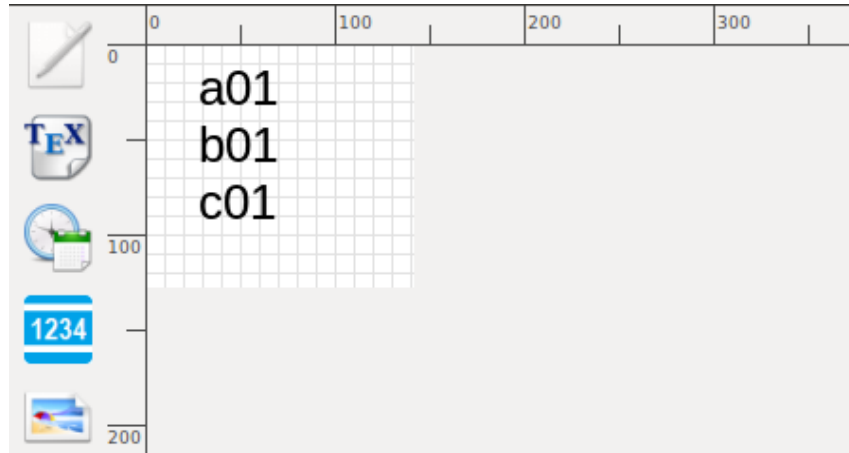


Figure 19: Message with Database Object

Print partial database record data in .csv file

User can use this function to print or reprint subset of database record data

- 1 After choose the .csv database data file in (Figure A.I.3), click "filter" button to open "Data Filter" dialog

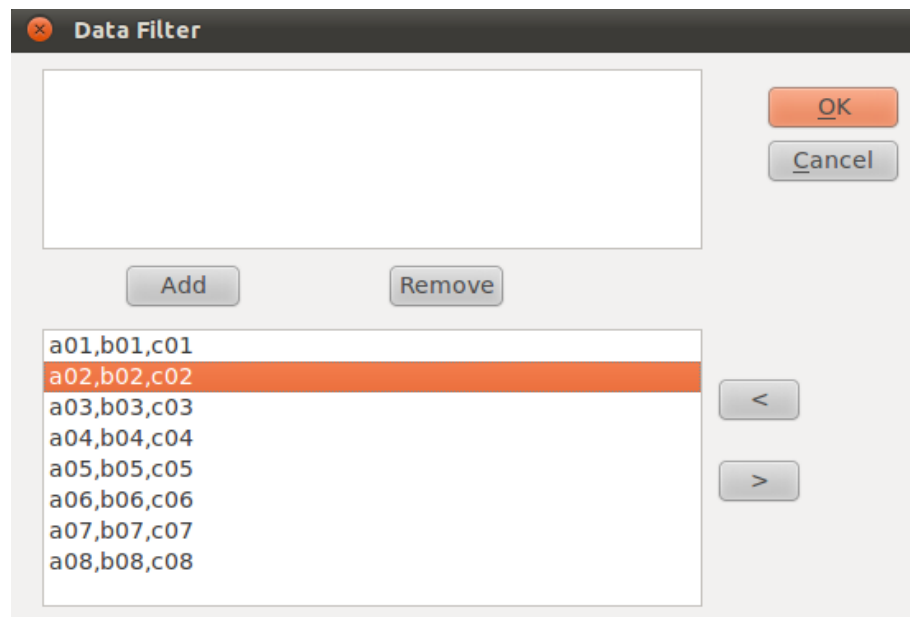


Figure 20: Data Filter Dialog

On "Data Filter" dialog, the Top list has the database record will be printed, the bottom list has all the database record in .csv file, "<" and ">" buttons are for Previous Page and Next Page, "Add" button can add selected database record from bottom list to top list, "Remove" button will remove selected database record from top list.

User can use this dialog to setup a subset of database record for printing

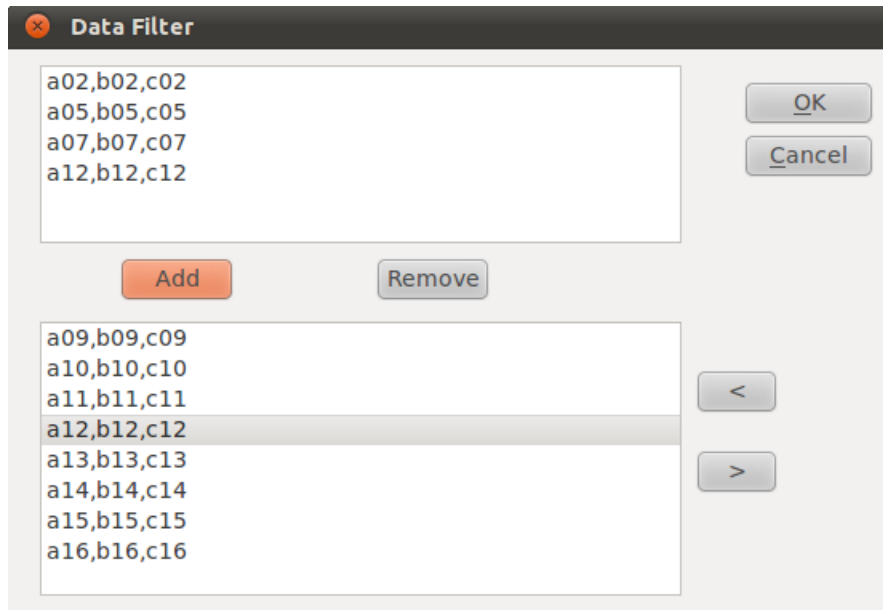


Figure 21: Data Filter Dialog - Add Data

- 2 After filtering data in "Data Filter" dialog, click "OK" button and return to "Text Editor" dialog. The "Text Editor" will show new and filtered database record data now

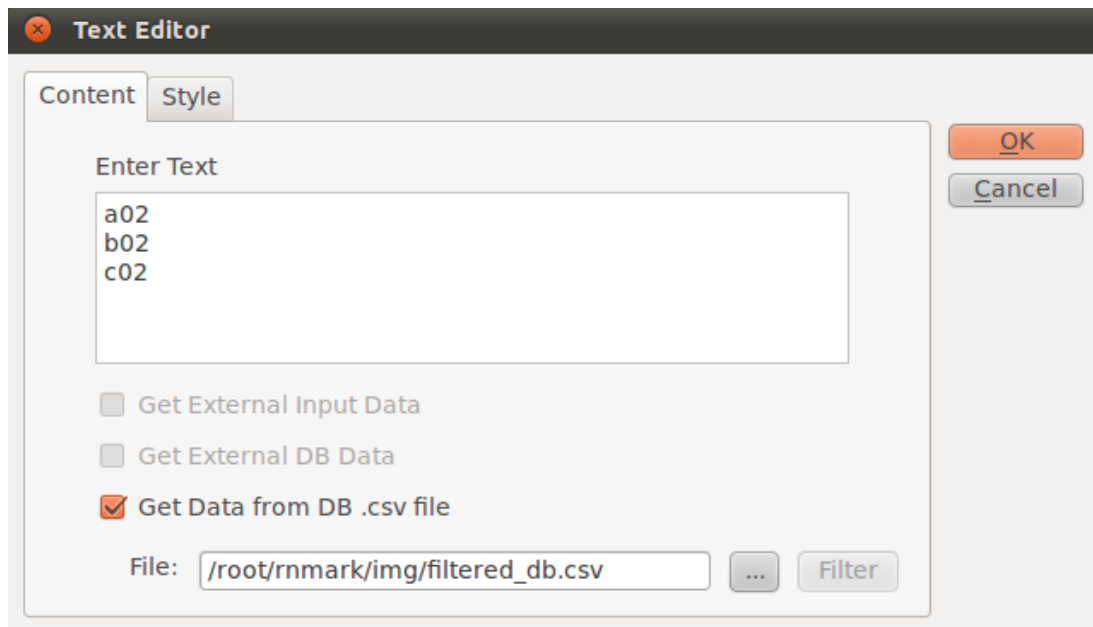


Figure 22: Text Editor (Filtered Database)

- 3 User can go on finishing message editing and do printing

Remote Mode

Prepare RNJet machine to receive database record data from PC

- 1 Turn on RNJet machine
- 2 Create a new message, and add external database data object
 - 2.1. Open "Text Editor" dialog, check "Get External DB data" checkbox, then type one your longest database record in "Enter Text" box.

Note: the text in "Enter Text" box will be used to decide the drawing area of database record data

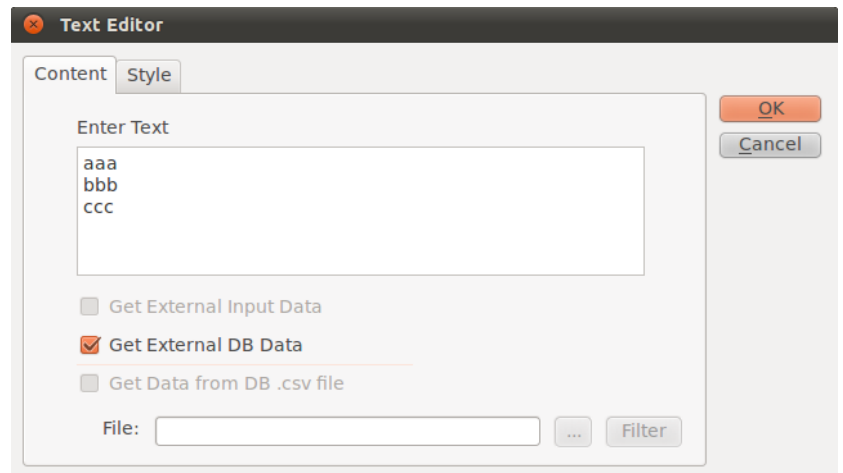




Figure 23: Text Editor (Get External DB Data)

- 3 Connect RNJet with PC which has RNSoft-RN232.exe application and database .csv data file using serial port cable.
- 4 Start printing on RNJet side

Send data to RNJet machine for printing

1. Run RNSoft-RN232.exe application
 - 1.1. Choose right serial port for PC
 - 1.2. Open the .csv database data file
 - 1.3. Select database record you want to send to print
 - 1.4. Click "Connect to printer" button () to send data to RNJet machine
 - 1.5. After finishing print, click "Disconnect from printer" button () to disconnect from printer

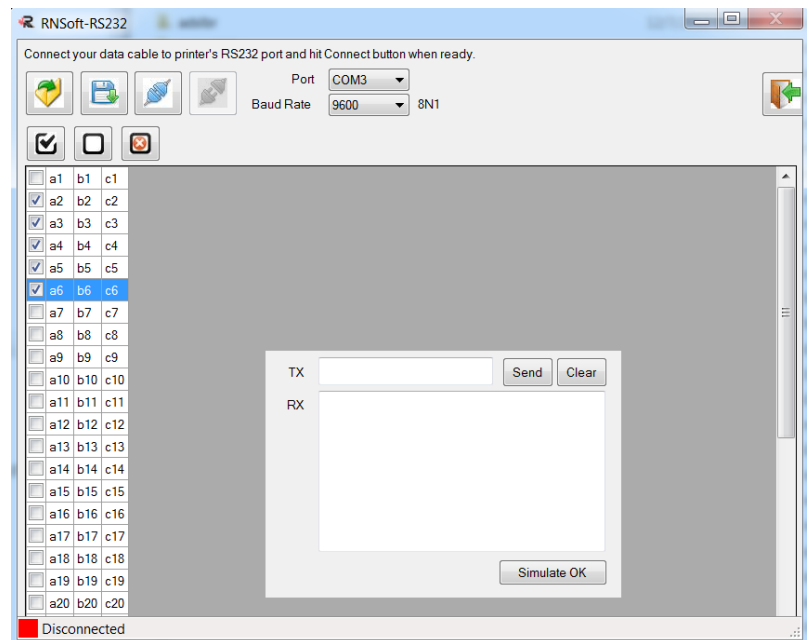


Figure 24: RNSoft-RS232 Application

Editing Options

Select

You can select the features that are displayed on the grid by just tapping once on the feature you want to select.

Move

Once a feature within the label has been selected you can move it by dragging your finger (or stylus) and displacing it to its new location. To get access to the quick setup tap on the “quick setup” icons on lower left of worksheet **P** (for printing option) and **E** (for editing option)

In order to have a more precise control of the movement of features you can use the “X” (Horizontal) and “Y” (Vertical) dial.

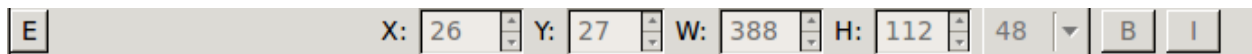



Figure 25: Quick Edit

1. Select the feature you want to relocate
2. Increase or decrease the “X” or “Y” co-ordinate accordingly to move the feature to its new location.

Edit

All the features that are displayed in the worksheet area can be edited.

To edit a feature:


1. Select the feature
2. Once selected tap on the “Edit”  icon

This will prompt the corresponding set-up window in where you can edit the feature.

Note: you can also double tap on the feature you want to edit and the set-up options will automatically pop-up.

Delete

To delete a feature:

1. Select the feature you want to delete
2. Tap the “delete” icon 

A window will pop-up that requires a confirmation to delete the feature.

Operating Setups

System Settings

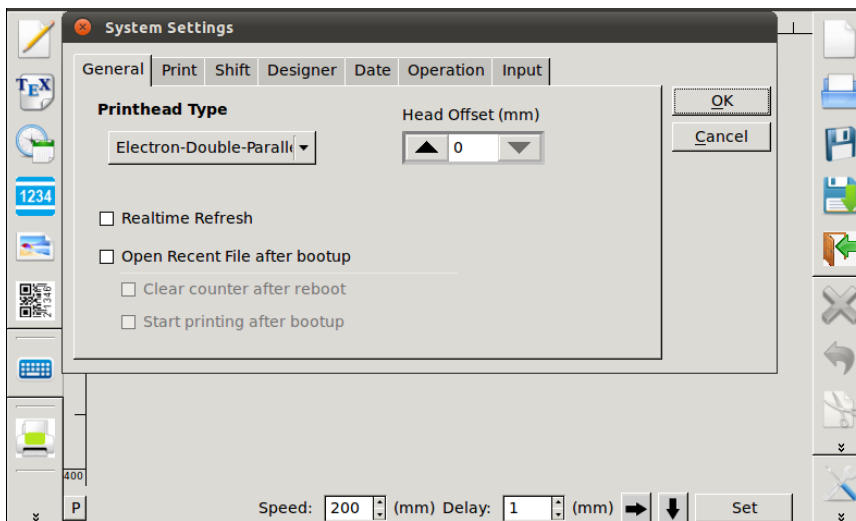
To access the system options tap on the “System Settings” icon



General Tab

Within the “General” tab you can identify the following printing options:

1. Width of the grid in the worksheet area
2. Printing delay after sensor activation
3. Printing speed



Printhead Type:

Specifying the printhead model.

Open Recent File after boot up: Once the system has been turned ON the last file that was saved is opened

Start printing after boot up: Once the system is turned ON it is ready to print when the sensor is activated.

Figure 26: System Settings- General Tab

Print head Type: Specifying the print head model.

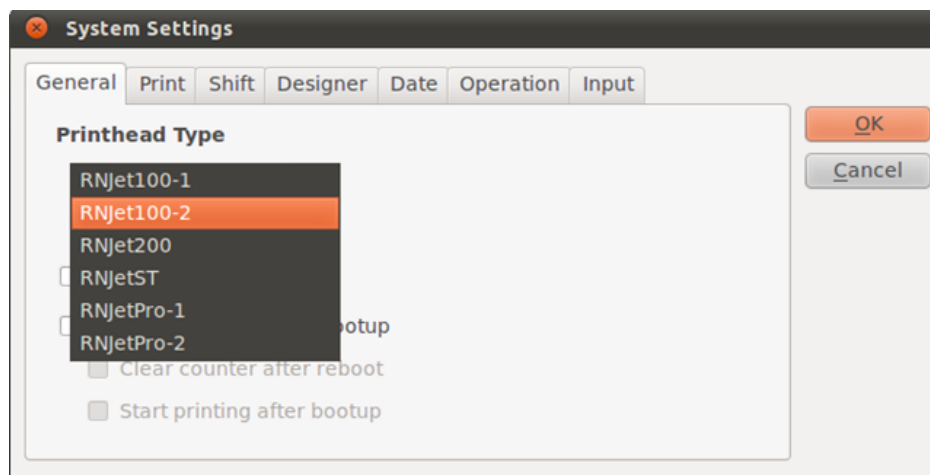


Figure 27: System Settings - Select Print Head Type

Print Tab

Edit Mode: when it is enabled the print head will purge while the user is editing.

Auto Purge: it will purge ink into print head nozzle but will not purge out the ink.

Purge out: the ink will purge out when this option is enabled.

The **delay** and **pitch** in which the purge starts can be indicated.

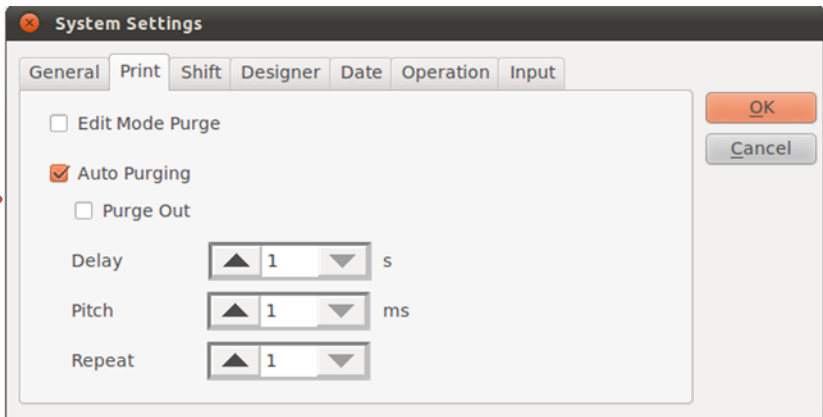


Figure 28: System Settings - Print Tab

Shift Tab

Add a Shift Code with Start time to create a list of shifts. Save the list by tapping on "Save" button.

The saved shifts can be inserted to the worksheet from "Date & Time" list

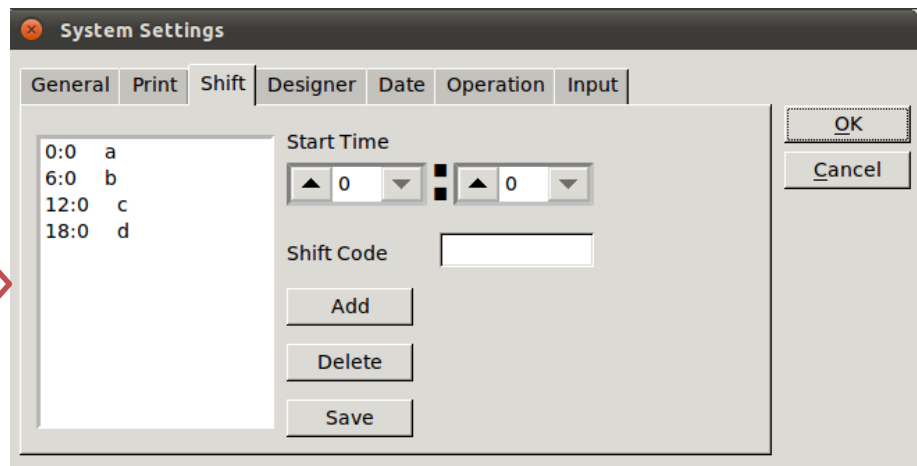


Figure 29: System Settings - Shift Tab

Designer Tab

Grid option:

check the box to see the grid on worksheet display.

Unit Options:

select millimetres, inches, or pixels as main unit

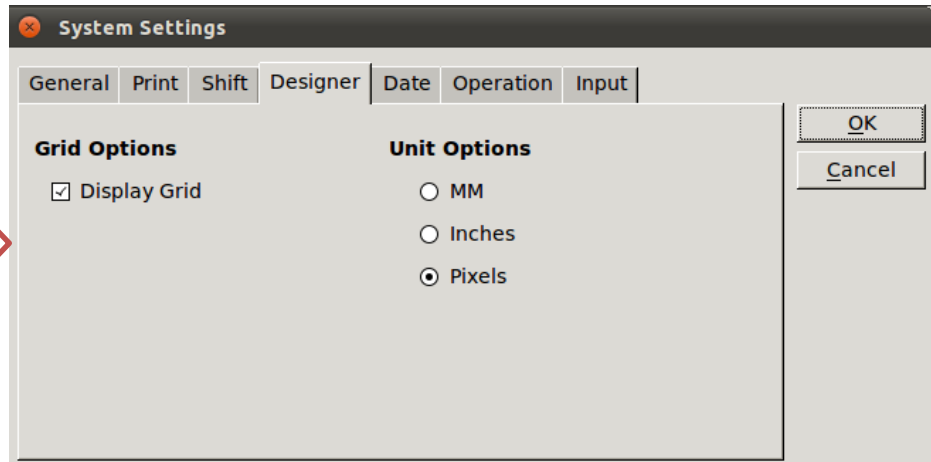


Figure 30: System Settings Designer Tab

Date Tab

Set the current date and time for the system

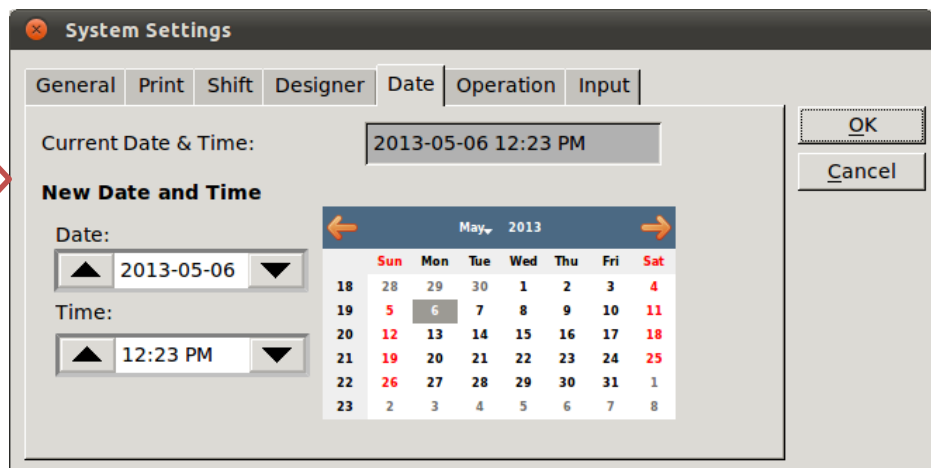
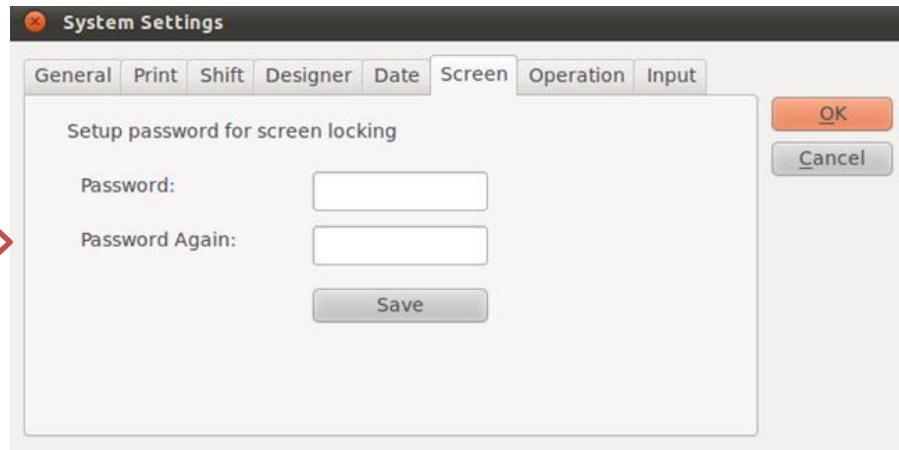


Figure 31: System Settings- Date Tab

Screen

Screen Locking:

User can set screen locking password (for unlocking screen) in System Settings dialog



Operation Tab

System font: select and style the system font

Language: choose system language from the list

Import Data: Import data from external drive such as USB

Calibrate: Calibrate the touch screen LCD.
(After pressing Calibrate the machine will restart to go to Calibration Mode)

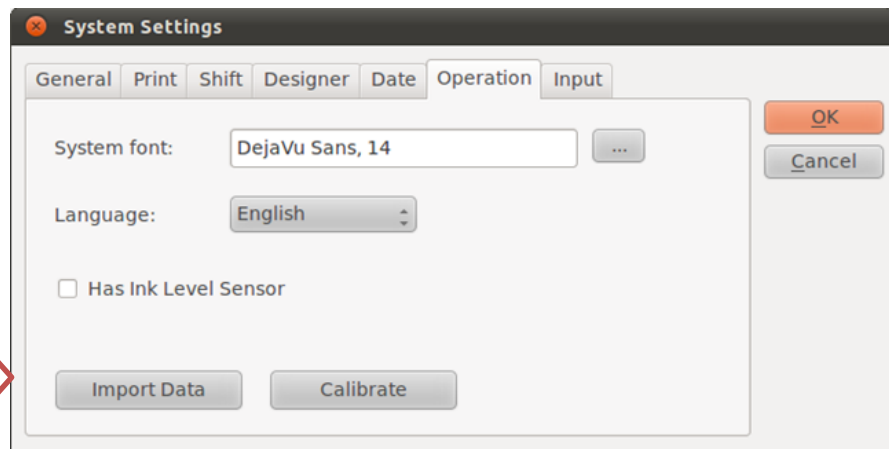
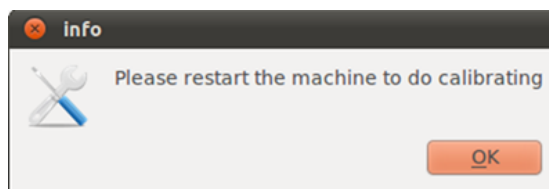


Figure 32: System Settings- Operation Tab



The USB drive files are updated in “Import Data” dialogue. By using left and right arrows, the files can be transferred from USB drive to system’s memory and vice versa.

Import data can be used to update RNSoft, or to add font or language.

Note: The files on the system can be deleted “Delete” button. The file can be also sorted by Data or Image

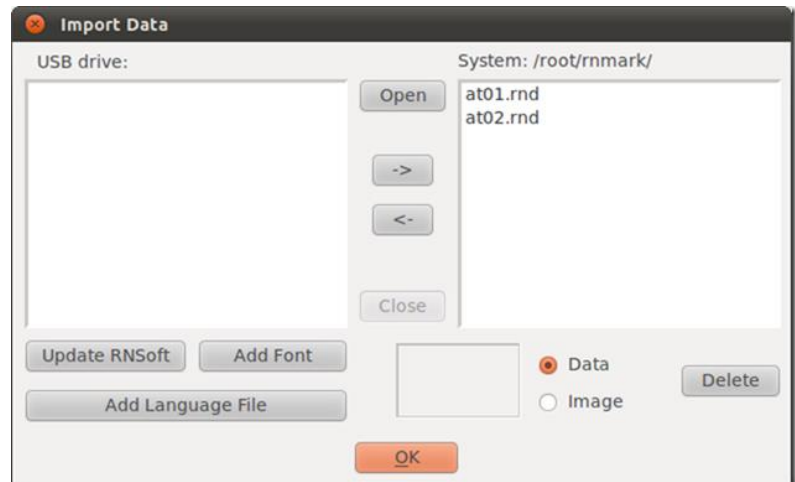


Figure 33: System Settings- Operation Tab (Import Data)

Input Tab

By enabling *external input*, external port such as **barcode scanner** can be used and the baudrated, parity, data bits and stop bits can also be modified.

Enable **Scan File Name** to scan files through an external device. (Barcode Scanner, Personal Computer, etc.)

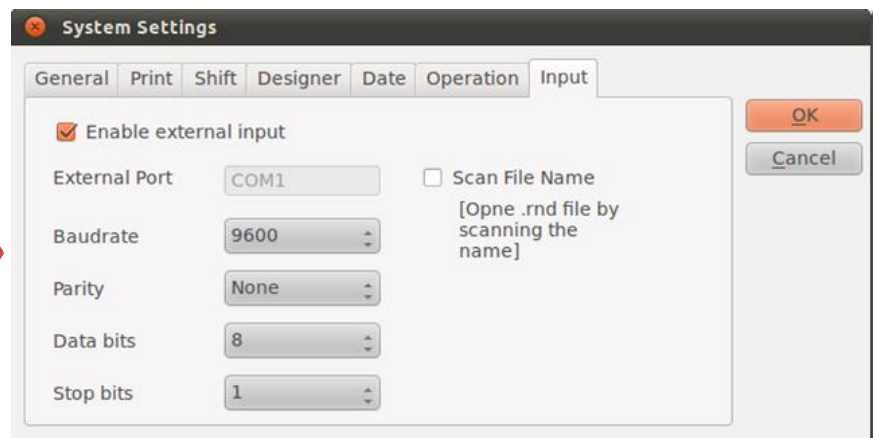



Figure 34: System Settings-Input tab

Print Settings

Print set-up allows the user to select and indicate certain parameters in order to achieve the optimal print. To access these options tap the “printing set-up” icon 

General Tab

Width: Adjust the grid size in the worksheet area by adjusting either the „pixel“ or „mm“ dial

Delay: Indicating printing delay after the sensor has been triggered. (I.e. the position of the print with respect to the object)

Speed: adjusting the printing speed according to the speed of the object.

Shaft Encoder: Check the box if a shaft encoder is available, to synchronize the printing speed.

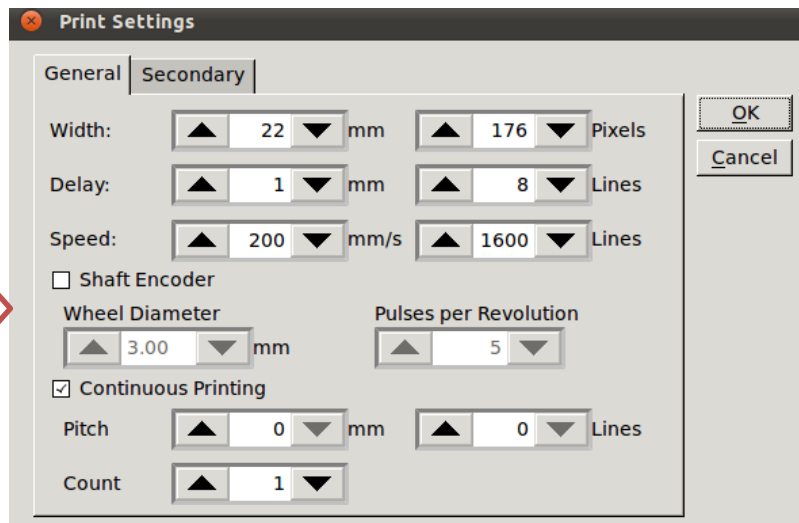


Figure 35: Print Settings- General Tab

Secondary Tab

Direction: The direction in which the printer head prints the label.

Invert: displaying features are inverted on the prints

Auto Update: Print is updated each time the sensor is activated in default mode.

Bold Level: to increase or decrease the bold level of the print message

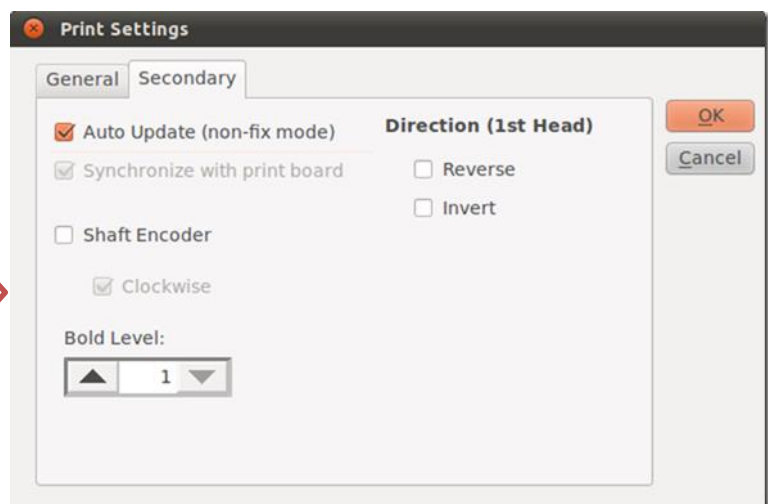


Figure 36: Print Settings - Secondary Tab

In a case that two printer heads are installed, direction of each head can be specified in this field.

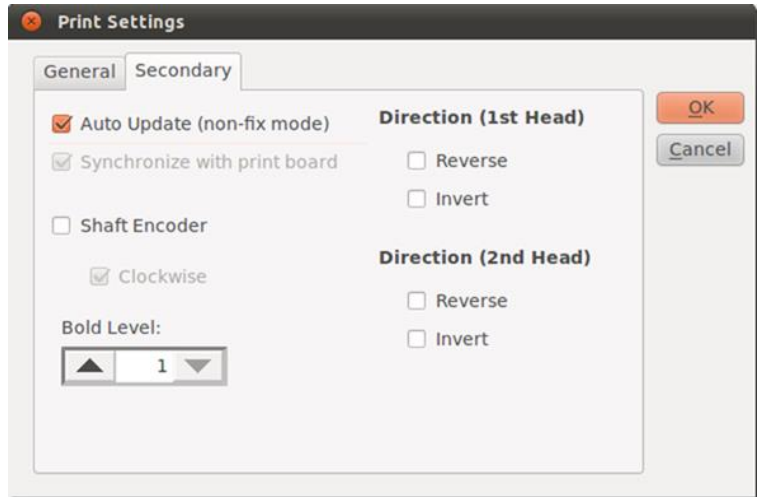



Figure 37: Print Settings - Secondary Tab

Print ON/OFF

After all features of the label is created and the set-options have been initialized you can start your print.


Turn ON the print by tapping the “Print ON” icon  (if the label has not been saved RNJet will ask you to save before the initial print)

Note: Once the Printing is in process you can no longer make any modifications to your label or any of the operating set-ups.

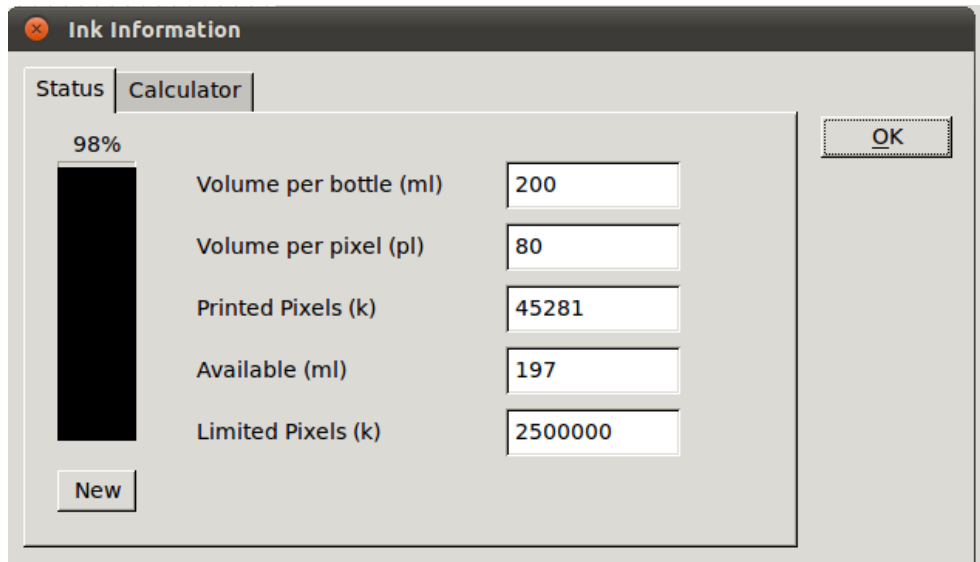
To turn OFF or to deactivate the prints you must tap on the “Print OFF” icon  . Once it is deactivated you can make the adjustments to your label or the settings.

Ink Calculation

Ink set-up allows you to view the ink consumption and the cost of the label that is being printed on the products.

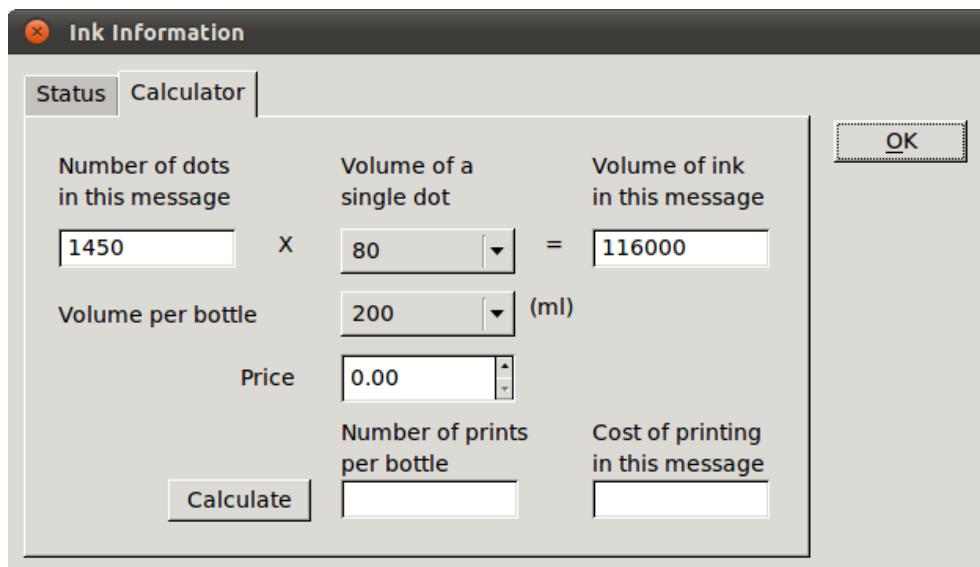
Tap the “Ink Calculation” icon  to view the ink setup.

The calculator computes the number of dots presents in the label and the price of ink to print the label is calculated.



Field	Value
Volume per bottle (ml)	200
Volume per pixel (pl)	80
Printed Pixels (k)	45281
Available (ml)	197
Limited Pixels (k)	2500000

Figure 38: Ink Information - Status

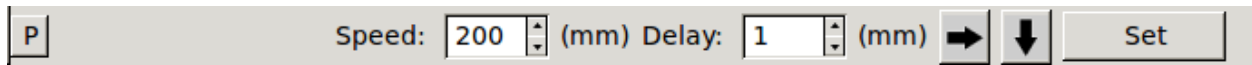


Field	Value
Number of dots in this message	1450
Volume of a single dot	80
Volume of ink in this message	116000
Volume per bottle (ml)	200
Price	0.00
Number of prints per bottle	
Cost of printing in this message	

Figure 39: Ink Information - Calculator

Quick Setup

The quick setup option allows you to have the most frequently used printing options in just one window. To get access to the quick print setup tap on the “quick setup” icons on lower left of worksheet **P** (for printing option) and **E** (for editing option)



Speed: Adjusting the printing speed according to the speed of the object.

Delay: Distance delay from the moment the sensor has been triggered



The direction in which the printheads print the label.

NOTE

In order to keep your settings saved on “Operating Setup”, make sure to EXIT properly via software (Refer to **User Interface->Icons for Exit Icon**)

(IF YOU TURN OFF THE MACHINE BEFORE EXITING, THE SETTINGS WILL BE LOST)